

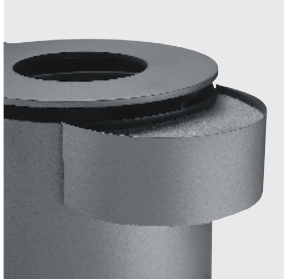
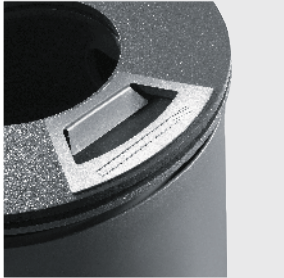
# PUNTO

PUNTO . Waste Receptacle

Galvanised steel post and container. Reduced mouth size. Tip function eases emptying. Triangular locking mechanism. PE liner. Choice of mica or DB finish.

Capacity: Punto 500 = 32 l; Punto 700 = 45 l

Additional charge: Soft or RAL finish. Flange plate. Metal liner. Integrated ash receptacle.



Product Name	Mounting	Order No.	Colour	Capacity
PUNTO 500	ground	80.30900.1	mica or DB finish	32 l
PUNTO 700	ground	80.30901.1	mica or DB finish	45 l
PUNTO 500	wall	80.30900.3	mica or DB finish	32 l
PUNTO 700	wall	80.30901.3	mica or DB finish	45 l

Product information  
[www.hess.eu/o301](http://www.hess.eu/o301)



IndustrieForum Hannover:  
 if Seal for design excellence

